

# KATO

COMPACT EXCAVATOR SALES, LLC

## Zero Tail Swing Mini Excavator

# V<sup>Four</sup> HD85

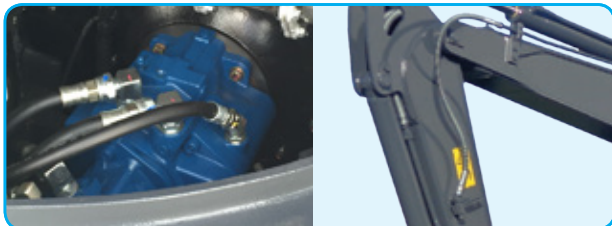
### High Performance EVOLUTION



- New Tier 4 EPA Compliant 59 HP Engine



- Over 14,750 lbs of Digging Force



- 20 GPM Aux Hydraulic Flow

### Large Covers for Easy Access



- Fuel Filter
- Water Separator



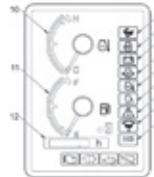
- Air Filter
- Hydraulic Control Valve
- Hydraulic Filter

### Comfort EVOLUTION

### New Easily Visible Monitoring System



- Easily visible monitor



- 1 Travel speed indicator
- 2 Glow indicator
- 3 Battery charge warning indicator
- 4 Engine oil pressure warning indicator
- 5 Water temperature warning indicator
- 6 Auto idle indicator
- 7 Control lock warning indicator
- 8 Water-separator warning indicator
- 9 ECO mode indicator
- 10 Water temperature gauge
- 11 Fuel gauge
- 12 Hour meter



- Legroom enlarged by 20%
- Cabin room enlarged by 25%

\*In comparison with our former model



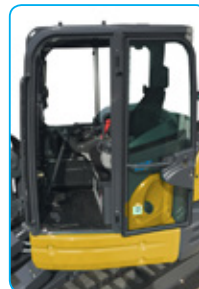
- Centralized switches (Right console box)

- A Engine starter switch
- B Throttle dial
- C Auto Idle selector switch
- D Light switch
- E Work mode selector switch



- Spare power port (12V 10A)

### Safety EVOLUTION



### ROPS/TOPS Compliance Operator Cab

### Error Prevention Lever Locking Console

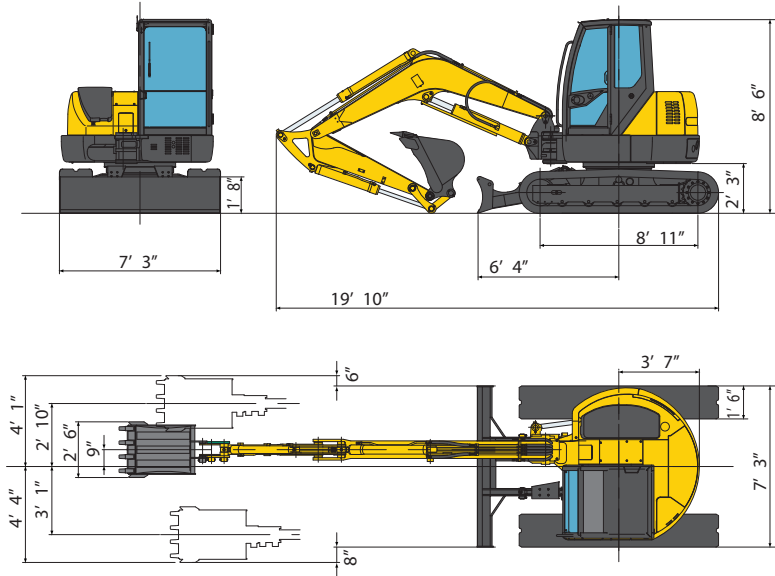
- All operations are blocked when the lever is raised.
- Neutral engine-start
- Auto-parking brake in swing & traction motors



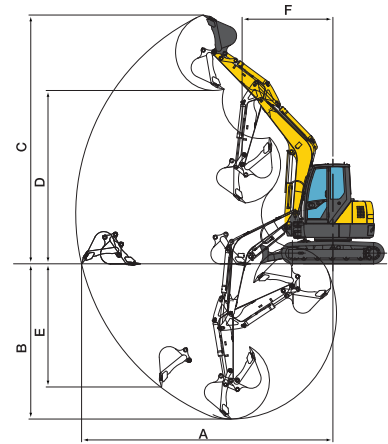
All-Lever Lock



■ Dimensions



■ Working Range

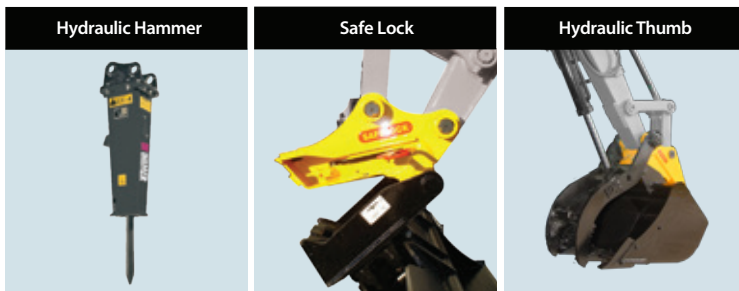


	Cabin
A Max. digging radius	23'4"
B Max. digging depth	15'1"
C Max. digging height	22'7"
D Max. dumping height	16'1"
E Max. vertical digging depth	11'4"
F Min. front turning radius	8'9"

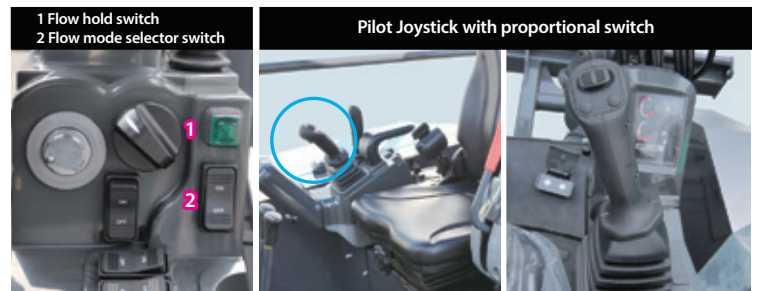
■ 85V4 Specifications

Performance		Boom swing system	
Bucket capacity	8.8 ft <sup>3</sup>	Type	Boom offset with hydraulic cylinder
Bucket width	30"	Swing angle ( L / R )	50°/80°
Operating weight: 4 Post (Cabin)	18,775 lbs.	Hydraulic system	
Transportation weight: 4 Post (Cabin)	18,610 lbs.	Pressure	3,550 psi
Swing speed	9 rpm	Type • Pump hydraulic flow	2 Piston/2Gear • 20 gpm x 2 + 14.0 gpm
Travel speed ( low/high)	1.6/2.7 mph	Dozer blade	
Gradeability	30°	Size	87"x20"
Ground pressure	5.6 psi	Lift above ground / Drop below ground	17.1"/16.5"
Max bucket digging force	14,730 lbs.	Max auxiliary flow	
Engine		1st line	20 gpm
Model	YANMAR 4TNV98 C Tier 4 Final	2nd line (optional)	12.0 gpm
Rated output	59.4 hp /2,100 rpm		
Fuel tank capacity	29 gallons		

Optional Attachments:



Features:



● Photographs may differ in some cases from actual objects. Specifications are subject to change without notice due to technical improvements or modifications.



400 Production Court  
 Elizabethtown, KY 42701  
 Phone: 800.538.1447  
 Fax: 270.737.0419  
 www.ihices.com

