

N^{FOUR} HD 55



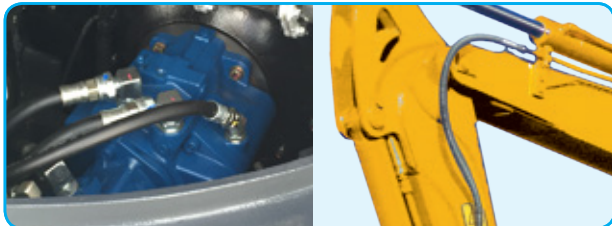
High Performance EVOLUTION



- New Tier 4 EPA Compliant 54HP Engine



- Over 11,000 lbs of Digging Force



- 29.7 GPM Aux Hydraulic Flow

Large Covers for Easy Access



- Easy Maintenance



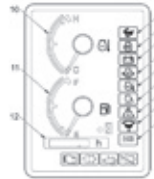
- Easy Access Air Filter

Comfortable EVOLUTION

New Easily Visible Monitoring System



- Easily visible monitor



- 1 Travel speed indicator
- 2 Glow indicator
- 3 Battery charge warning indicator
- 4 Engine oil pressure warning indicator
- 5 Water temperature warning indicator
- 6 Auto idle indicator
- 7 Control lock warning indicator
- 8 Water-separator warning indicator
- 9 ECO mode indicator
- 10 Water temperature gauge
- 11 Fuel gauge
- 12 Hour meter



- Legroom enlarged by 20%
- Cabin room enlarged by 25%

*In comparison with our former model



- Centralized switches (Right console box)

- A Engine starter switch
- B Throttle dial
- C Auto Idle selector switch
- D Light switch
- E Work mode selector switch



- Spare power port (12V 10A)

Safety EVOLUTION



ROPS/TOPS Compliance Operator Cab and Canopy

Error Prevention Lever Locking Console

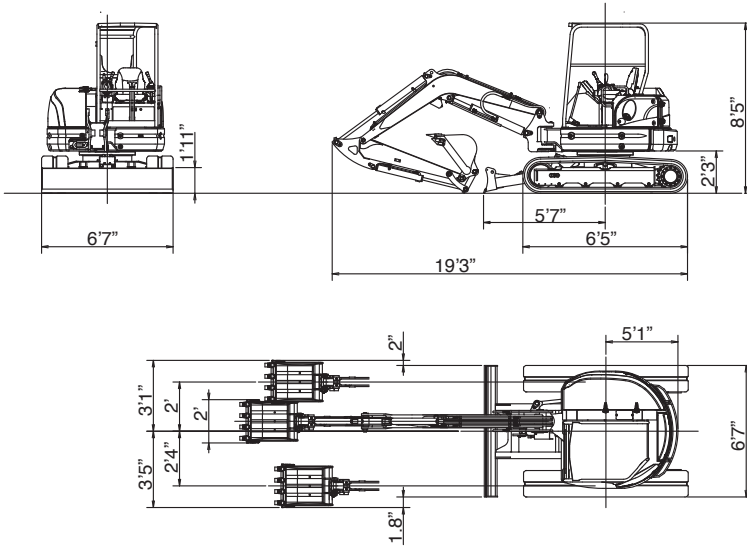
- All-lever lock
- Neutral engine-start
- Auto Parking brake in swing & traction motors

*All operations are blocked when the lever is raised.

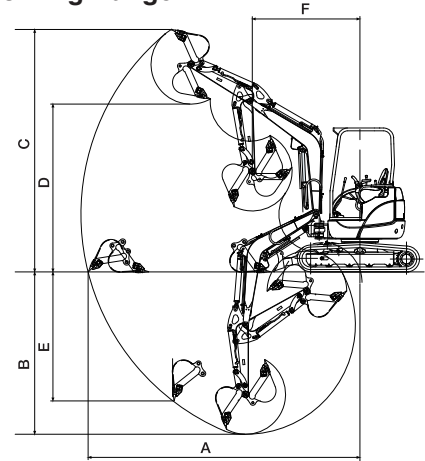




■ Dimensions



■ Working Range

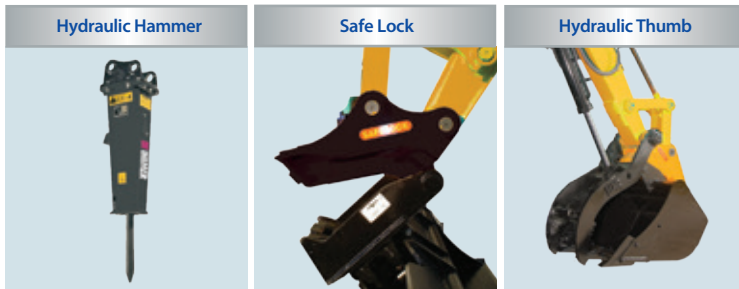


	4-Post/Cabin
A Max. digging radius	20'
B Max. digging depth	12'8"
C Max. digging height	18'10"
D Max. dumping height	12'10"
E Max. vertical digging depth	9'8"
F Min. front turning radius	7'3"
At right boom swing	5'10"

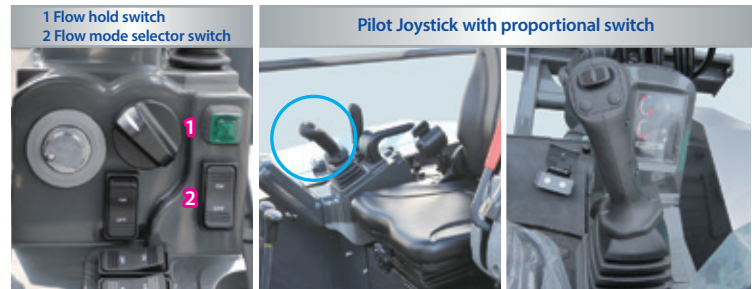
■ 55N4 Specifications

Performance		Boom swing system	
Bucket capacity	4.6 cu. ft.	Type	Boom offset with hydraulic cylinder
Bucket width	24"	Swing angle (L/R)	50°/90°
Operating weight: 4-post(Cabin)	12,447 lbs. (12,733 lbs.)	Hydraulic system	
Transportation weight: 4-post(Cabin)	11,795 lbs. (11,955 lbs.)	Pressure	2,987 psi
Swing speed	9.0 rpm	Pump • type/hydraulic flow	2 Piston/2 Gear • 17.1 gpm x 2 + 12.2 gpm
Travel speed (low/high)	1.6/2.8 mph	Dozer blade	
Gradeability	30°	Size	14.5"
Ground pressure	4.5 psi	Lift above ground / Drop below ground	15" / 15"
Max bucket digging force	11,071 lbs.	Max auxiliary flow	
Engine		1st line	29.7 gpm
Model	YANMAR 4TNV98 C Tier 4 Final		
Rated output	54.7 hp/2400 rpm		
Fuel tank capacity	19.8 gallons		

Optional Attachments:



Features:



Photographs may differ in some cases from actual objects. Specifications are subject to change without notice due to technical improvements or modifications.



COMPACT EXCAVATOR SALES, LLC
 400 Production Court • Elizabethtown, KY 42701
 Phone: 800.583.1447 • Fax: 270.737.0419
 WWW.KATOCES.COM

