

SJ1056 TH

TELEHANDLER

KEY FEATURES

- 10,000 lbs (4,535 kg) Maximum lift capacity
- 56' 3" (17.14 m) Maximum lift height
- 4,000 lbs (1,814 kg) Capacity @ maximum lift height (no outriggers)
- 6,000 lbs (2,722 kg) Capacity @ maximum lift height (on outriggers)
- 42'6" (12.95 m) Maximum forward reach
- 400 lbs (181 kg) Capacity @ maximum forward reach (no outriggers)
- 3,000 lbs (1,361 kg) Capacity @ maximum forward reach (on outriggers)
- DPF & DEF Free Tier 4 final 74hp/287 lb-ft Deutz TCD 3.6L engine
- 20,000 lbs Drawbar pull
- 3 Speed Dana powershift transmission & Dana axles
- Yoke mounted lifting hook
- 48" Quick attach, floating pin carriage
- Pallet forks, 2.36"x4"x48", 10,000 lbs capacity

OPTIONAL POWERPLANT

- Tier 4 Final 107hp / 320 lb/ft Deutz TCD 3.6L (includes DEF/SCR system)

TIRE OPTIONS

- Foam filled 14 x 24 16PR grip lug
- Airless solid rubber 13 x 24
- Non-marking foam filled 14 x 24 16PR rough terrain
- Non-marking airless solid rubber 13 x 24

STANDARD FEATURES

- Axle mount outriggers
- Auxiliary hydraulics
- Engine block heater
- Quick attach carriage mount
- Rear window with wiper
- Side window
- Suspension seat
- Single multifunction pilot operated joystick control
- In cab engine multifunction display
- Hydraulic test ports
- Lockable in cab storage box
- Rear towing hitch pin
- Fiberglass engine cowling
- Steel component and access covers
- 2 Year Gold Leaf Warranty (5 year structural warranty)

FORK OPTIONS

- Pallet forks, 2.36"x4"x48", 60" or 72", 10,000 lbs capacity
- Pallet forks, 2.25"x5"x48", 60" or 72", 12,000 lbs capacity
- Fully tapered forks, 1.75"x7"x48", 12,000 lbs capacity
- Block forks, (set of 6) 2"x1.5"x46", 9,000 lbs capacity

† Standard lead times may be increased when optional equipment is added, consult factory.

‡ Capacities and machine weights may differ when options are added.

SJ1056 TH TELEHANDLER

10,000 lbs (4,535 kg) capacity, 56' 3" (17.14 m) maximum lift height

SPECIFICATIONS

SJ1056 TH

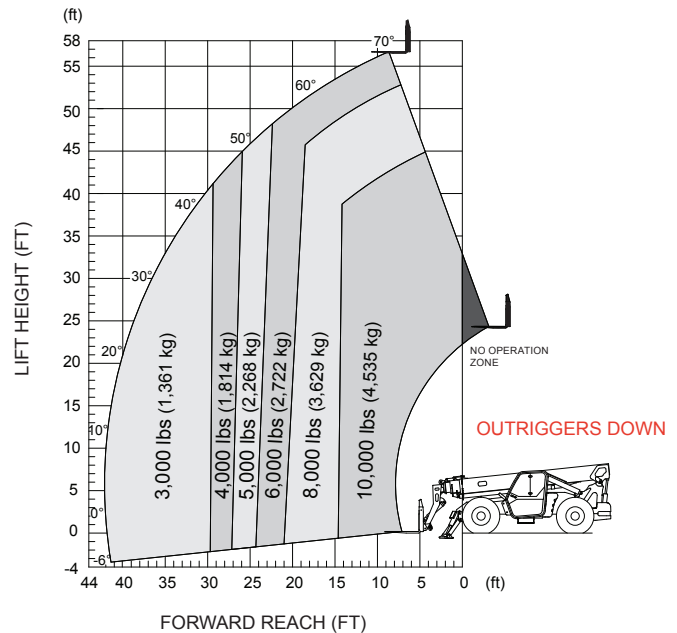
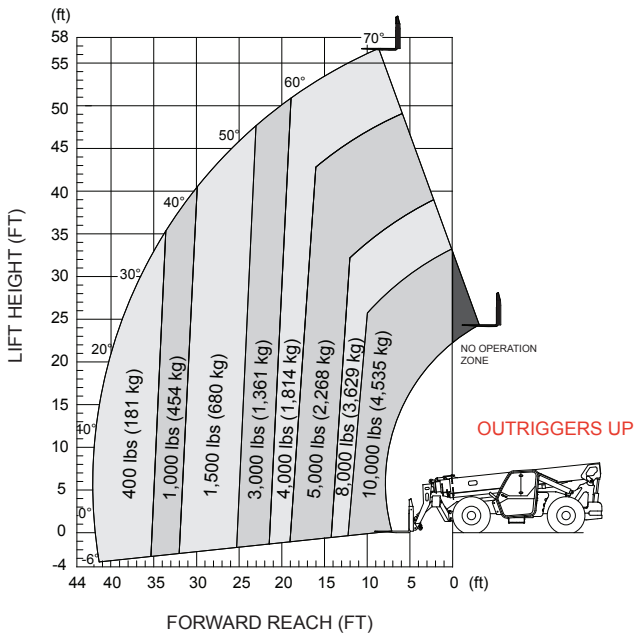
| | |
|---|-------------------------------------|
| Maximum Lift Capacity | 10,000 lbs (4,535 kg) |
| Maximum Lift Height | 56' 3" (17.14 m) |
| Rated Lift Capacity @ Maximum Height | 4,000 lbs (1,814 kg) |
| Rated Lift Capacity @ Max Height w. O/R | 6,000 lbs (2,722 kg) |
| Maximum Forward Reach | 42' 6" (12.95 m) |
| Rated Lift Capacity @ Maximum Reach | 400 lbs (181 kg) |
| Rated Lift Capacity @ Max Reach w. O/R | 3,000 lbs (1,361 kg) |
| O/A Length - Less Forks | 22' 2" (6.75 m) |
| Overall Height - Stowed | 8' 1" (2.47 m) |
| Overall Width | 8' 5" (2.56 m) |
| Ground Clearance | 19" (48.3 cm) |
| Turning Radius - Outside | 153" (3.89 m) |
| Operating Weight | 31,500 lbs (14,288 kg) |
| Engine | 74hp / 287 lb-ft Deutz TCD 3.6L T4F |
| Max Travel Speed - Forward | 15 mph (24 km/h) |
| Drawbar Pull | 20,000 lbs |
| Transmission | Dana Powershift, 3 Speeds F/R |
| Axles | Dana |
| Steering | 3 mode (Front Wheel, 4 Wheel, Crab) |
| Tires | Pneumatic 14 x 24 16PR Grip Lug |
| Fuel Tank Capacity | 35 gallon (132 L) |
| Hydraulic Reservoir | 43.85 gallon (166 L) |

OPTIONS

- Closed cab (adds front and top window with wipers, full door, heater/defroster, operator fan)
- Air conditioning (closed cab only)
- Continuously variable transmission
- Premium joystick
- Four wheel fenders
- Road light package (2 front headlights, front & rear turn signals, tail lights, brake lights)
- Work light package (2 front facing & two rear facing halogen work lights)
- Boom light package (2 boom mounted LED work lights)
- Rotating beacon
- Backup sensor
- Backup sensor and camera
- Cold weather package (cold start engine oil, 50/50 antifreeze mix, battery blanket & hyd. tank heater)
- Service convenience package (remote axle grease points & clean drain engine oil pan valve)
- Positive air shut-off valve
- Reserve brake system
- Pintle hitch (in lieu of standard hitch pin)
- Non destructive testing
- ELEVATE telematics package
- Warranty options (3 year and 5 year options available)

QUICK ATTACH CARRIAGES / ATTACHMENTS

- 48", 60" or 72" Floating pin carriage, 10,000 lbs capacity
- 48", 60" or 72" Floating pin, side tilt carriage, 10,000 lbs capacity
- 72" Floating pin, swing carriage, 9,000 lbs capacity
- 53" Fork positioner, 10,000 lbs capacity
- 2' High capacity jib boom, 10,000 lbs capacity
- 12' or 15' Truss boom, 2,000 lbs capacity
- 1.75 Cubic yard bucket, 4,000 lbs capacity



Skyjack Head Office

55 Campbell Rd. Guelph, ON Canada N1H 1B9
 Sales Inquiries: 1-877-755-4387 (1-877-SJLIFTS)
 Main Switchboard: 1-800-265-2738
 Phone: 519-837-0888
 Fax: 519-837-8104
 Email: skyjack@skyjack.com
 www.skyjack.com

IMPORTANT

- Machine design complies with ANSI/ITSDF B56.6-2016 stability requirements for rough terrain forklifts.
- Rated capacities shown are with machine on firm level ground, steered straight with frame level and on properly inflated tires.
- Read boom angle and boom extension, then determine allowable load from chart.
- Do not exceed rated loads as dangerous and unstable machine conditions will result.
- Always travel with boom retracted in the lowest possible position.

